

DOCUMENTATION

Slip Rings User manual & Assembly for Models

DM-PSR-38M-10 (10A)

DM-PSR-38M-10 (20A)

DM-PSR-38M-10 (30A)

DM-PSR-38M-10 (40A)

and

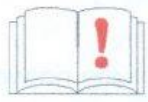
DM-PSR-38M-10 (50A)

CONTENTS

1	Safety Service of the Slip ring Assembly.....	3
2	Normal Use.....	3
3	Reconstructions and Modification.....	3
4	Spare Parts.....	3
5	Selection and Qualification of Personnel	3
5.1	Personnel for Installation Mounting and Maintenance	4
6	Technical Data.....	5
7	Description of Slip ring Assembly.....	6
8	Arrangement of the slip ring Assembly.....	6
8.1	Slip ring Assembly.....	6
8.2	Brush Apparatus.....	6
8.3	Admissible Loads.....	6
8.4	Applications	6
8.5	Slip Rings Torque.....	6
9.0	Specifications	7
10.0	Examples for Installation.....	8

1 Safety service of the sliping assembly

The slip rings assembly of DIGIMAX INC is designed according to the state of the art and the approved safety regulations. Nevertheless danger can result for life and limb of the operator or third person by its usage, as well as damage of the device, other material assets or the environment.



Therefore install the sliping assembly only in technical soundness as well as according to regulations, safety-and dangerous-conscious and under observance of the manual!

Repair immediate particularly failures, which can allow the security.



Please complete the operation instructions with instructions due to existing national regulations

2 Normal use

The sliping assembly is a unit which is solely used for transmission of electrical power and data.

Others than the above described use is regarded as not normal. For damages which result from not normal use DIGIMAX INC will not take over any responsibility. This is the sole risk of the user.

Part of the normal use are also following the operation instructions and observing the inspection- and maintenance conditions.

3 Reconstructions and modifications

Any changes to drawings have to be approved by DIGIMAX.

If reconstructions or modifications are effected at the sliping assembly without an acceptance of DIGIMAX, the warranty expires.

4 Spare parts

You may only use original DIGIMAX spare parts resp. spare parts recommended by DIGIMAX as DIGIMAX will not take over responsibility for damages resulting from use of foreign spare parts.

5 Selection and qualification of personnel

Please observe the following requirements to the personnel allowed to work at the sliping assembly:

- Only employ reliable personnel!
- Observe legally approved minimum age!
- Only employ skilled and instructed personnel!

Clearly determine responsibilities of the personnel for mounting, installation and maintenance!

Make sure that only personnel engaged for this purpose is working on the device! for accident prevention and environmental protect

5.1 Personnel for installation, mounting and maintenance



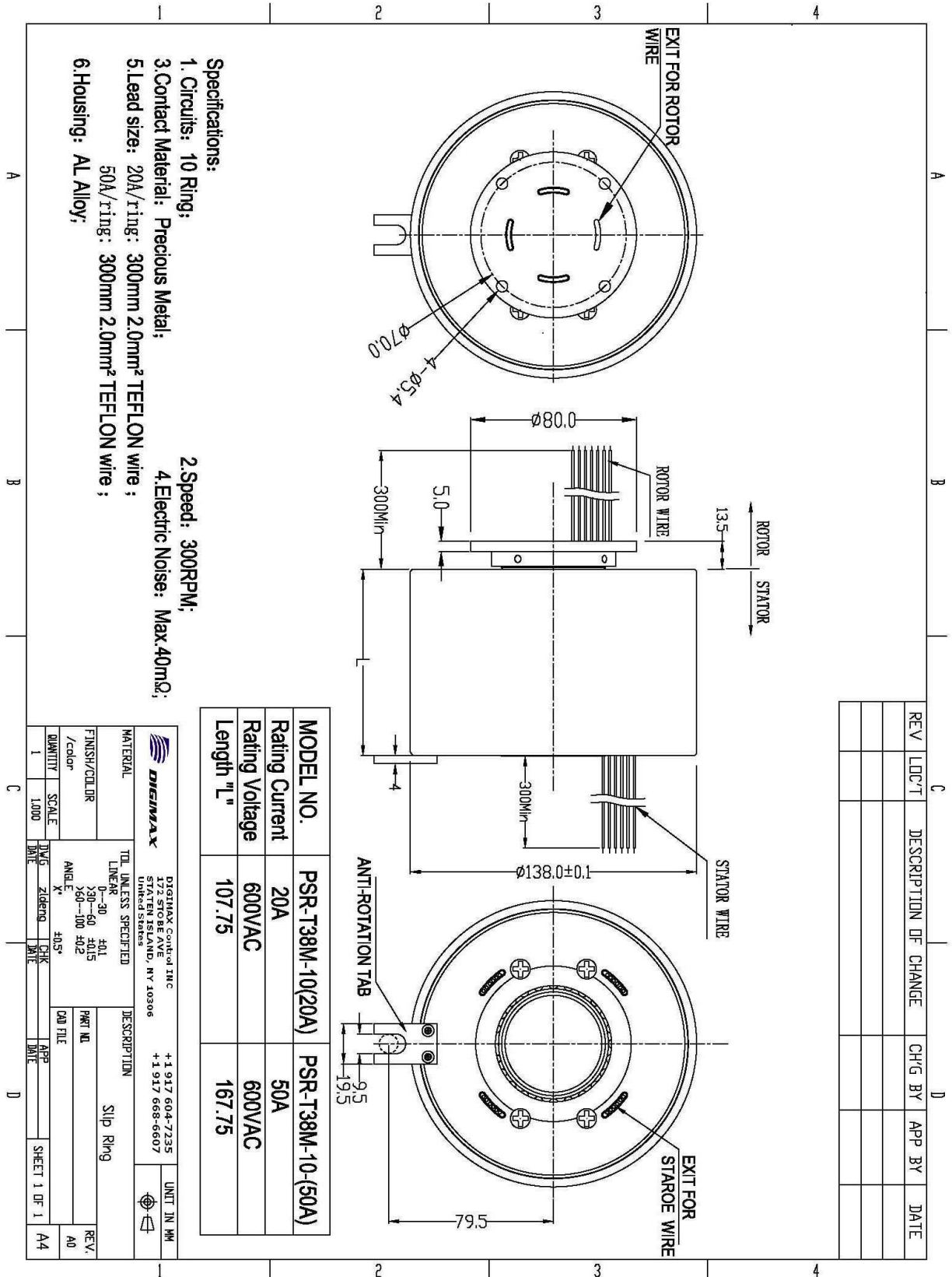
Attention!

The electrical installation of the slipping assembly may only be effected by an electrical skilled employee or by instructed persons under supervision of an electrical skilled employee acc. to the electro-technical regulations

All skilled employee must be capable of assessing the works, of recognizing possible dangers and avoiding these dangers.

The installation, mounting and maintenance may only be effected by skilled workers who – due to their technical training and experiences – have sufficient knowledge on safety prescriptions accident prevention prescriptions guidelines and approved regulations of technique

6 Technical data



7 Description of Slipring assembly

Slipring assembly is according to drawing PSR-T38M-10(20A) (V.A0)

10 way 380~ 600 V AC / 20 A

The slipring assembly is made in silver-spring wire-technology. The housing is made of aluminium-sandcasting and corresponds to protection class IP67. On rotor- and stator-side the device is pre-wired.

8 Arrangement of the slipring assembly

8.1 Slip assembly

The slip assembly is made by brass rings & Insulating sheets ;The surface of the brass rings is hard-Silver plated.

8.2 Brush apparatus

The current collectors are made of spring-hard Silver wires. The contact pressure is adjusted by means of the bending angle. The individual brushes are engaged

8.3 Admissible loads

The max. possible voltage which is admissible for the respective transmission ways, depends on the air- and creepage distances at the slip assembly and the brush block.

The max. possible current per way depends on the wiring cross sections to the terminals and the number of Silver-spring wires.



Per way a max. current up to 50 Amp. can be transmitted according to slip rings model .

8.4 Applications

Due to the compact design a large number of transmission ways is realized within smallest possible space.



This version of slipring assemblies can be used up to a relative speed of 300rpm.

8.5 Slip Rings Torque

Torque will be large than normal slip ring because of **IP67** sealing, but it will be more and more smooth after use.

9.0 Specification

Circuits	: 10 Rings
Contact Material	: Precious Material : Ultra Soft Silver/Copper (Stainless Steel Model) : Soft Copper (Steel Model & AL Alloy)
Current	: 10, 20 , 30 , 40 or 50 Amp.
Voltage	: 380 V AC up to 600 V AC
Chassis	: AL Alloy (AL) , Steel (S) or Stainless Steel (SS) Models
Protection	: IP-67 (Option IP-68)
Lead wire	: 300mm Teflon wire.
Speed	: 300 RPM
Electrical Noise	: Max 40m ohm for contact

10.0 Examples for Installation

